



# ADC - conduit gland for rigid and flexible conduit

## Technical specification



### Suitable for the following cable types:

-  Non-armoured and braided cable in rigid conduit
-  Non-armoured and braided cable in flexible conduit

### Operating temperature:

-60°C to +140°C

### Material:

Nickel-plated brass for superior corrosion resistance. 316L stainless steel option available. It is recommended that a suitable lubricant is used on all threads of stainless steel versions.

### Ingress protection (IP):

IP66 / IP68 according to the method of attachment and the condition of the equipment area.

### Metric threads:

- Fitted on equipment with a flat surface, on threaded hole, or on blank hole ("Exd" use excluded) fixed by a qualified locknut with all threads engaged:
- IP64 and IP66 without sealing washer and surface finish of Ra 0.4µm or on threaded hole and surface finish of Ra 1.6µm max.
- IP64 and IP66 with all sealing washers (red fibre, green fibre, neoprene, nylon or PTFE) on surface Ra 6.3µm max.
- IP68 tested 30m/7 days with red fibre or green fibre sealing washers on surface Ra 6.3µm max.

### NPT threads:

- IP64, IP66 and IP68 tested 30m/7 days, always fitted on equipment with threaded hole; HTL lubricant may be needed.

### Certifications and compliances:

#### ATEX certificate no: ITS 16ATEX18417X

Zones 1 and 2, Groups I, IIA, IIB and IIC

Zones 21 and 22 Groups IIIA, IIIB and IIIC



II2GD / Ex db IIC / Ex eb IIC / Ex tb IIIC

IM2 Ex db I / Ex eb I

#### IECEx certificate no: IECEx ITS 16.0027X

Zones 1 and 2, Groups I, IIA, IIB and IIC

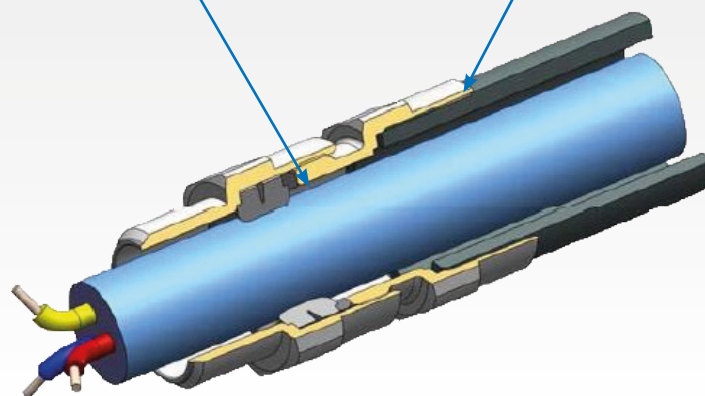
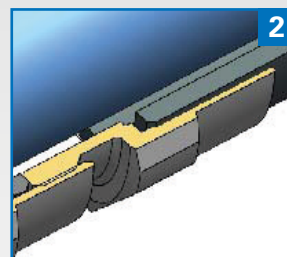
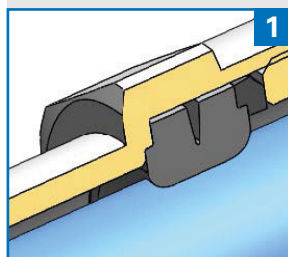
Zones 21 and 22, Groups IIIA, IIIB and IIIC

Ex db IIC / Ex eb IIC / Ex nRc IIC / Ex tb IIIC

IM2 Ex db I / Ex eb I



## Features and benefits

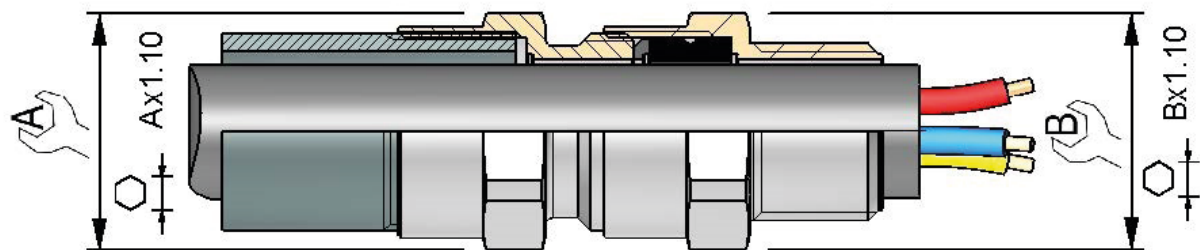


- 1: Specifically formulated elastomer for IP sealing on outer sheath of cable
- 2: Threaded junction for rigid or flexible conduit



# ADC - order codes and dimensions

## Dimensions



\* For 'across corners' dimensions, multiply 'across flats' dimensions by 1.1

SERIES	MALE THREAD SIZE	CABLE SEALING RANGE	FEMALE THREAD SIZE	MATERIAL	OPTION
ADCC ADCS	M25	3	M25	NPN	

SELECT

NPN  
SSN

Nickel-plated brass  
Stainless steel

SELECT

0 = XS  
1 = S  
2 = M  
3 = L

SELECT

ADCC = rigid connection  
ADCS = swivel connection

### CODES

K1  
BLANK

Accessories kit 1  
No option

### KIT OPTIONS

K1

Kit 1 contents:

- Locknut
- Green composite washer

Example of code: **ADCCM253M25NPN**  
ADC rigid connection male M25 x female M25;  
sealing range 3, nickel-plated brass material

Series	Male Thread Size				Sealing Range	Sealing Range Metric (NPT)		Female Thread Size			Dimensions		Gland Size
	Thread Size	Thread Size Code	Thread Size	Thread Size Code		Min	Max	Metric	NPT	BSPP	A	B	
	Metric		NPT										
ADCC	20	M20	1/2"	N050	0	2.8	5.5	M20	N050	G050	24.0	24.0	3
ADCC	20	M20	1/2"	N050	1	4.5	8.5	M20	N050	G050	24.0	24.0	4
ADCC	20	M20	1/2"	N050	2	7.0	12.0	M20	N050	G050	24.0	24.0	5
ADCC	20	M20	1/2"	N050	3	10.0	16.0 (15.5)	M20	N050	G050	24.0	24.0	6
ADCC	20	M20	1/2"	N050	3	10.0	16.0 (15.5)	M25	N075	G075	30.0	24.0	6
ADCC	25	M25	3/4"	N075	2	10.0	16.0 (15.5)	M25	N075	G075	30.0	30.0	6
ADCC	25	M25	3/4"	N075	3	13.5	20.5	M25	N075	G075	30.0	30.0	7
ADCC	25	M25	3/4"	N075	3	13.5	20.5	M32	N100	G100	41.0	30.0	7
ADCC	32	M32	1"	N100	2	13.5	20.5	M32	N100	G100	41.0	41.0	7
ADCC	32	M32	1"	N100	3	18.0	27.5 (26.0)	M32	N100	G100	41.0	41.0	8
ADCC	32	M32	1"	N100	3	18.0	27.5 (26.0)	M40	N125	G125	48.0	41.0	8
ADCC	40	M40	1 1/4"	N125	2	18.0	27.5 (26.0)	M40	N125	G125	48.0	48.0	8
ADCC	40	M40	1 1/4"	N125	3	23.0	34.0	M40	N125	G125	48.0	48.0	9
ADCC	40	M40	1 1/4"	N125	3	23.0	34.0	M50	N150	G150	55.0	48.0	9
ADCC	50	M50	1 1/2"	N150	1	23.0	34.0	M50	N150	G150	55.0	55.0	9
ADCC	50	M50	1 1/2"	N150	2	29.0	41.0	M50	N150	G150	55.0	55.0	10
ADCC	50	M50	-	-	3	35.0	45.0 (48.0)	M50	N150	G150	64.0	55.0	11
ADCC	50	M50	-	-	3	35.0	45.0 (48.0)	M63	N200	G200	72.0 (64.0)	55.0	11
ADCC	63	M63	2"	N200	2	35.0	45.0 (48.0)	M63	N200	G200	72.0 (64.0)	72.0	11
ADCC	63	M63	2"	N200	3	42.0	56.0 (53.0)	M63	N200	G200	72.0	72.0	12
ADCC	63	M63	2"	N200	3	42.0	56.0 (53.0)	M75	N250	G250	85.0	72.0	12
ADCC	75	M75	2 1/2"	N250	2	42.0	56.0 (53.0)	M75	N250	G250	85.0	85.0	12
ADCC	75	M75	2 1/2"	N250	3	50.0	65.0 (62.5)	M75	N250	G250	85.0	85.0	13
ADCC	75	M75	2 1/2"	N250	3	50.0	65.0 (62.5)	M90	N300	G300	95.0	95.0	13
ADCC	90	M90	3"	N300	2	58.0	74.0	M90	N300	G300	95.0	95.0	14
ADCC	90	M90	3"	N300	3	66.0	83.0 (78.0)	M90	N300	G300	110.0	110.0	15
ADCC	-	-	3 1/2"	N350	2	66.0	83.0 (78.0)	M90	N350	G350	110.0	135.0	15
ADCC	-	-	3 1/2"	N350	3	75.0	93.0 (92.0)	M110	N350	G350	120.0	135.0	16
ADCC	110	M110	-	-	2	75.0	93.0 (92.0)	M110	N350	G350	120.0	135.0	16
ADCC	110	M110	4"	N400	3	85.0	104.0	M110	N400	G400	135.0	135.0	17