

EHP 50



Ex-Heating Plate / Finned Heater, self limiting:

The electrical heating plate EHP 50 is designed to heat valve blocks, protection boxes and small cabinets. Internally the heater contains a heating cartridge with self limiting temperature characteristics. By self-increasing the electrical resistance with rising ambient temperature, a continuous temperature regulation is achieved.

Options:

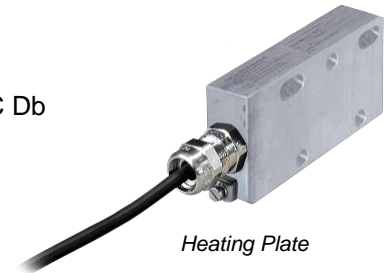
- O = Heating plate in standard design
- R = Heating plate with fins and mounting brackets
- F = Heating plate with failure switch T < 5°C opening (250VAC, 5A)
- B = Heating plate with fins, mounting brackets and failure switch
- Z = Special design: armoured cable or other options upon request

Marking:

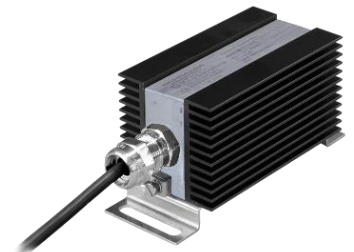
Gas	⊕ Ex II 2 G Ex d IIC T4 / T3 Gb
Dust:	⊕ Ex II 2 D Ex tb IIC T135°C / T200°C Db
EC Type Examination Certificate:	EPS 15 ATEX 1041
IEC Ex Certificate	IECEX EPS 15.0055
EAC Ex Certificate:	RU C-DE.AA87.B.00141

Technical Data:

Rated Voltage:	110-250VAC
Max. Rated Current:	0,5A
Rated Power:	EHP 50 T4: 50W / EHP 50 T3: 80W
Connection cable:	Silicon cable 3x1 mm ² , 3 m
Weight without / with fins:	0,8 kg / 1,3 kg
Operation Temperature:	T4: -60°C - +120°C / T3: -60°C - +180°C
Degree of Protection:	IP 68



Heating Plate



Finned Heater

